

CASE STUDY



WANTAGE

Client: Renaissance Retirement Ltd.

Location: Church Street, Wantage OX12 8BW

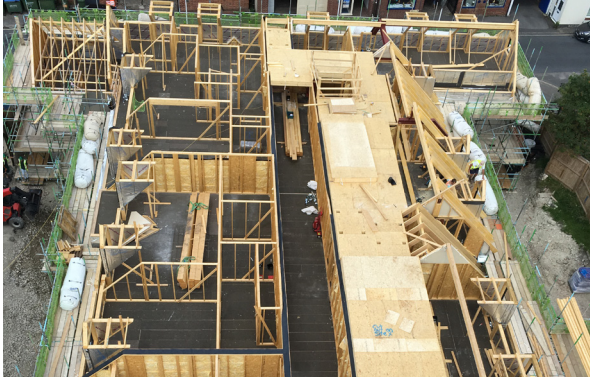
Duration: June 2016 – September 2017

Project Value: £5,600,000.00

Project Size: 33,000 sq. ft.

SCOPE

Full Demolition of the site and the construction of 32 one and two bedroom retirement apartments over three storeys with communal facilities on the ground floor, soft & hard landscaping with 28 car parking spaces.



The works included, but were not limited to;

- Demolition of the former magistrates court and police station;
- Including extensive asbestos removal prior to demolition. Removal of underground storage tanks and ground remediation to remove any contamination.
- The main construction of the build was timber frame taking advantage of the time savings achieved employing off site construction.
- The sloping site presented challenges which were resolved by designing the build into two blocks connected via glazed walkways which required respecting accessibility regulations.
- The heating and hot water was provided to the building by the installation of a community heating system powered by a gas boiler within a central plant room.
- Top quality finishes were included as per the clients specification, including Porcelanosa bathroom tiles, Hans Grohe and Villeroy and Boch bathroom fittings. German kitchens were also fitted along with Silestone worktop.
- External hard and soft landscaping was designed and installed to enhance the level changes across the site.

